

Fees and Regulations

The Burial Grounds are open to Parishioners and Non-Parishioners.

The fees and regulations can be found on the Parish Council website www.hwpc.org.uk and there are different rates depending on whether you are a Parishioner or Non-Parishioner. Fees are reviewed every year and any increases will be introduced on the 1 January for the current year. If you would like to talk to a member of staff regarding a burial or reserving a plot please contact the office on **01435 865700** we are open Monday to Friday 9.30 am to 3.00 pm. We close for lunch between 1.00 pm and 1.30 pm or please email info@hwpc.org.uk.

Opening Times

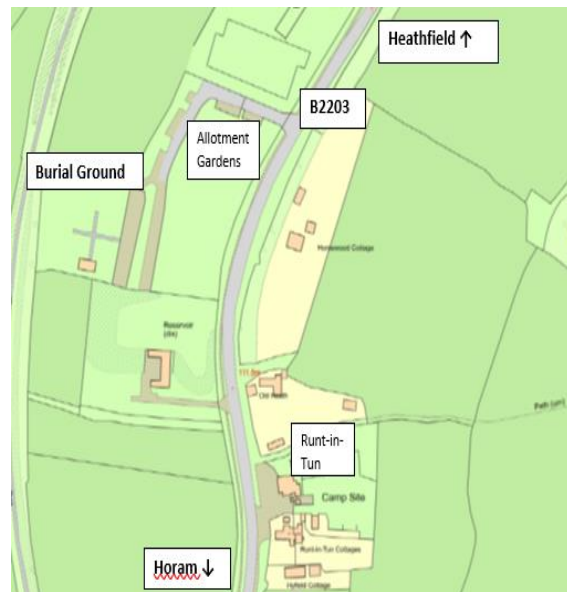
The burial ground at Theobalds Green is open from 8.00 am to dusk and dogs are allowed if kept on leads and to the paths.

Directions

From Hailsham on the A267, turn right onto the B2203 through Horam High Street continue through Maynards Green, past the Runt-in-Tun public house on your right and the entrance to the site is shortly after on your left-hand side.

From Heathfield High Street turn into Station Road, continue to the traffic lights at the Heathfield Tavern public house, turn right into Hailsham Road B2203 and a short distance after Ghyll Road the site will be on your right-hand side.

Turn into the site and follow the access road through the allotments area. The burial grounds are located at the rear of the site, either side of the cart lodge building.



BURIAL INFORMATION

HEATHFIELD AND WALDRON PARISH
COUNCIL
73 HIGH STREET
HEATHFIELD, EAST SUSSEX TN21 8HU
01435 865700 www.hwpc.org.uk

ST BARTHOLOMEW'S,
LITTLE LONDON ROAD
CROSS IN HAND, HEATHFIELD TN21
OLT



AND
THEOBALDS GREEN BURIAL GROUND
HEATHFIELD TN21 8BT



INTRODUCTION

Heathfield and Waldron Parish Council are responsible for the burial grounds at St Bartholomew's, Cross in Hand, a small area in the graveyard at All Saints, Waldron and the burial grounds at Theobalds Green, Heathfield. The burial ground at St Bartholomew's and at All Saints, Waldron is only available for second interments in existing plots.

Theobalds Green burial grounds are set within an attractive, wooded site adjoining the Cuckoo Trail with access off the B2203. This site consists of a traditional burial ground with ashes plots, a woodland burial ground with ashes plots and a further woodland area for the scattering of ashes.

The Woodland Burial ground has been planted with trees and wildflowers which are allowed to grow naturally. The marking of a grave or the planting of your own trees or shrubs is not permitted here.

The traditional burial and ashes areas allow memorials to be placed on grave sites and the area is regularly maintained.

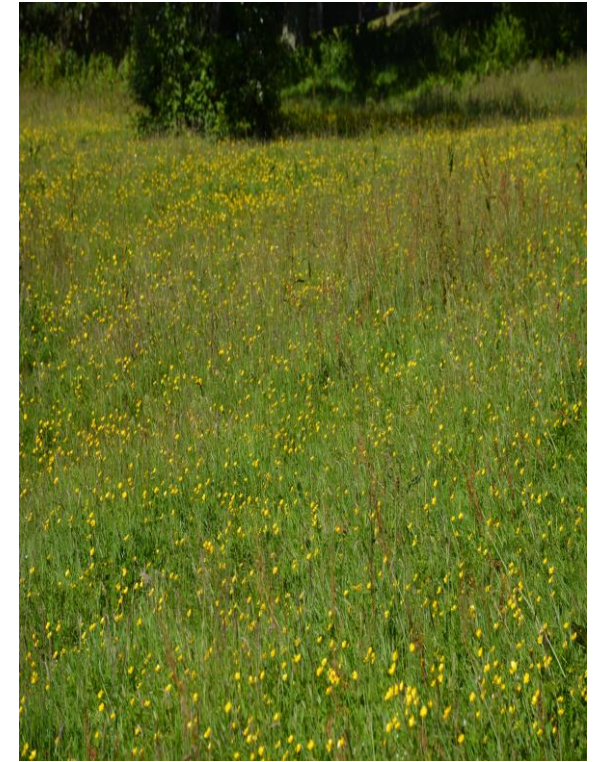
CART BARN



Situated in the Burial Grounds at Theobalds Green is an open sided Cart Barn. The Cart Barn can be used for small services or gatherings and families using this facility would need to provide their own seating, if this was required.

There is electricity and a disabled toilet in the building. Car parking is available close-by.

WOODLAND BURIAL GROUND



The Parish Council have erected bird/owl boxes, dormouse and bat boxes to encourage wildlife and there are several bird feeders scattered around the grounds.

Wreaths and floral tributes laid at the time of the burial will be removed after two to three weeks to encourage wildlife and wild flowers.